

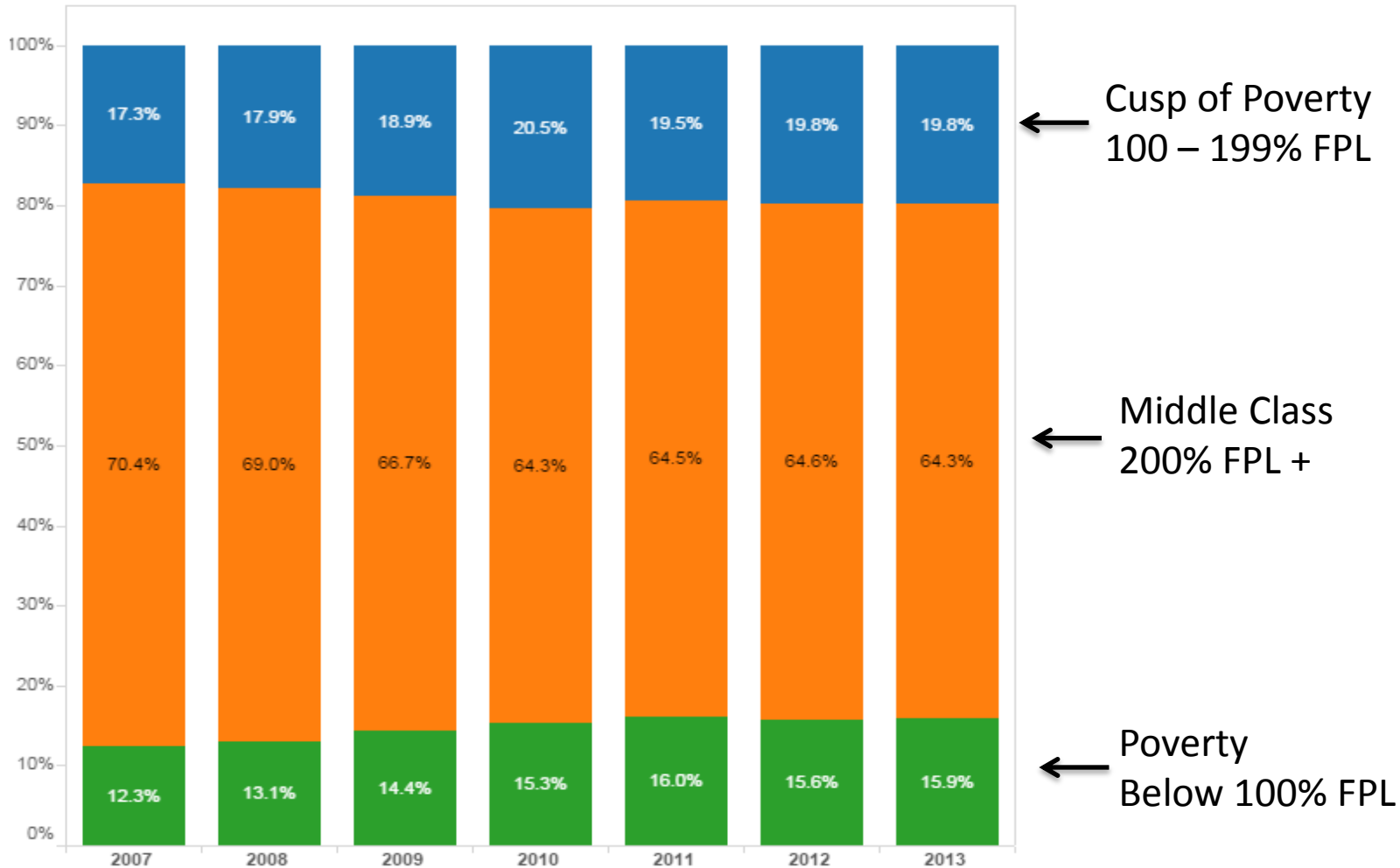
Status of Working Families in Indiana

By Derek Thomas

with support from

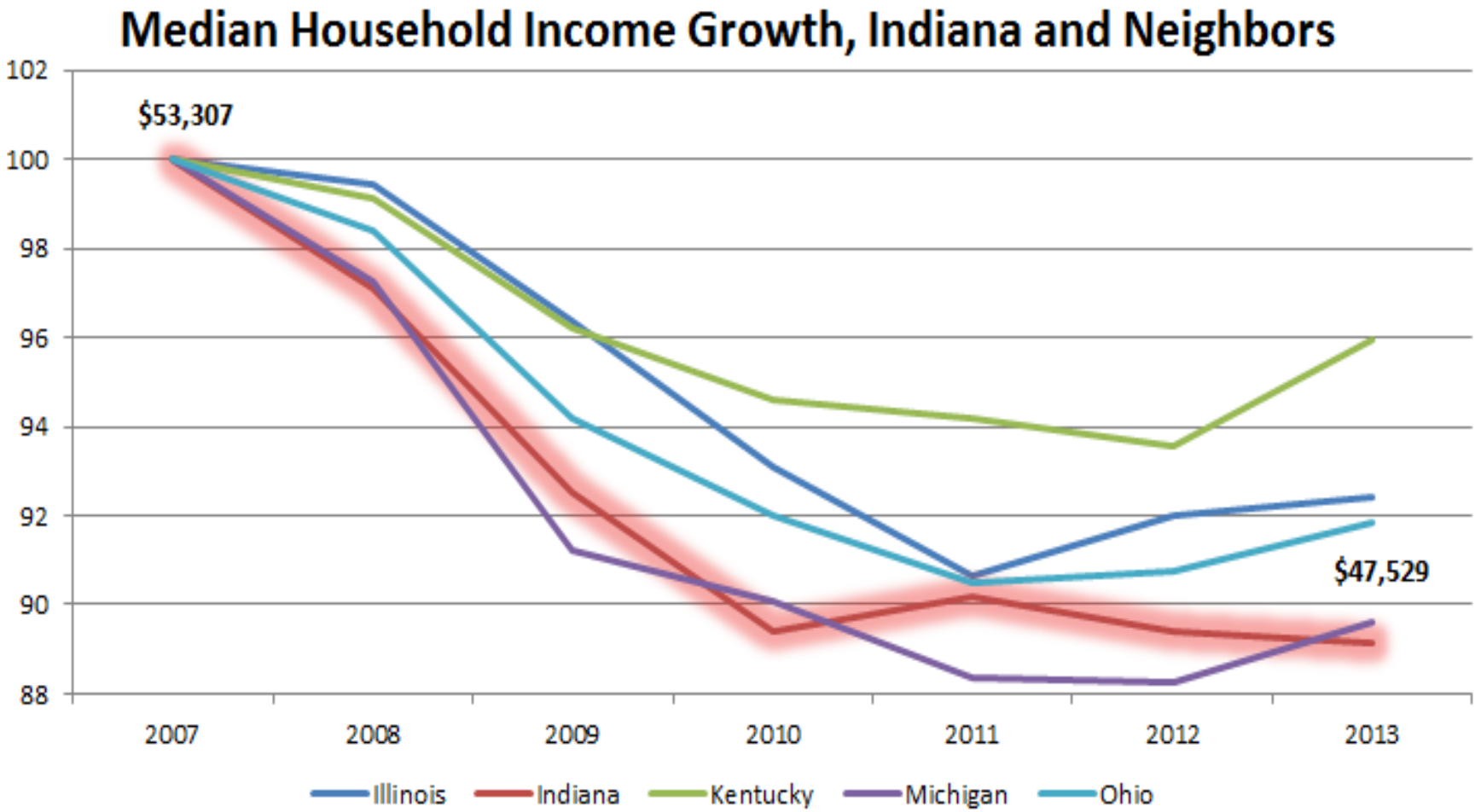


Indiana's Shrinking Middle Class



Source: Census, American Community Survey data

Still-Declining Household Incomes

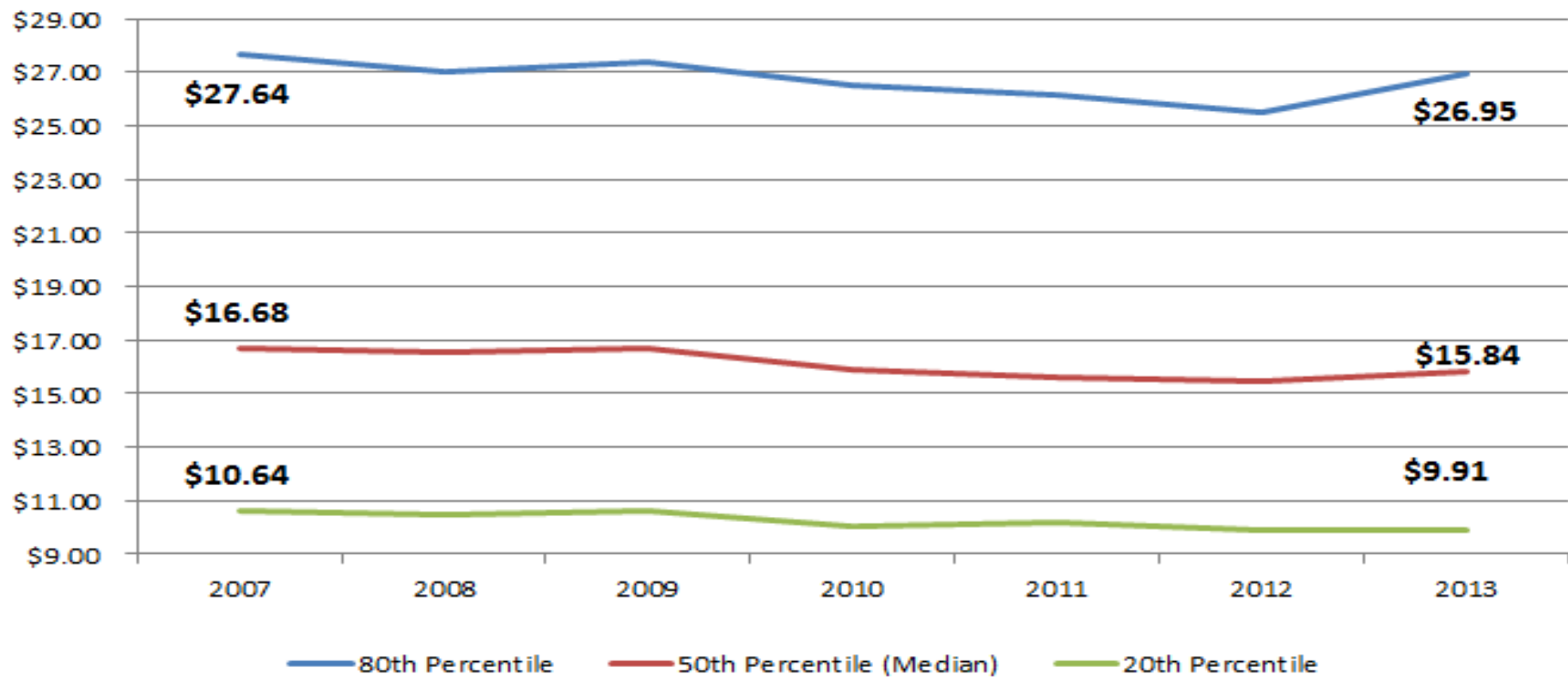


Source: American Community Survey

Median Hourly Wages Are Still Down \$0.80 Since Great Recession

Plus, 20th Percentile Wages Are Still Declining

Hourly Wages



Source: Current Population Survey

Indiana's Top 3 Industries

(507,042 Jobs)

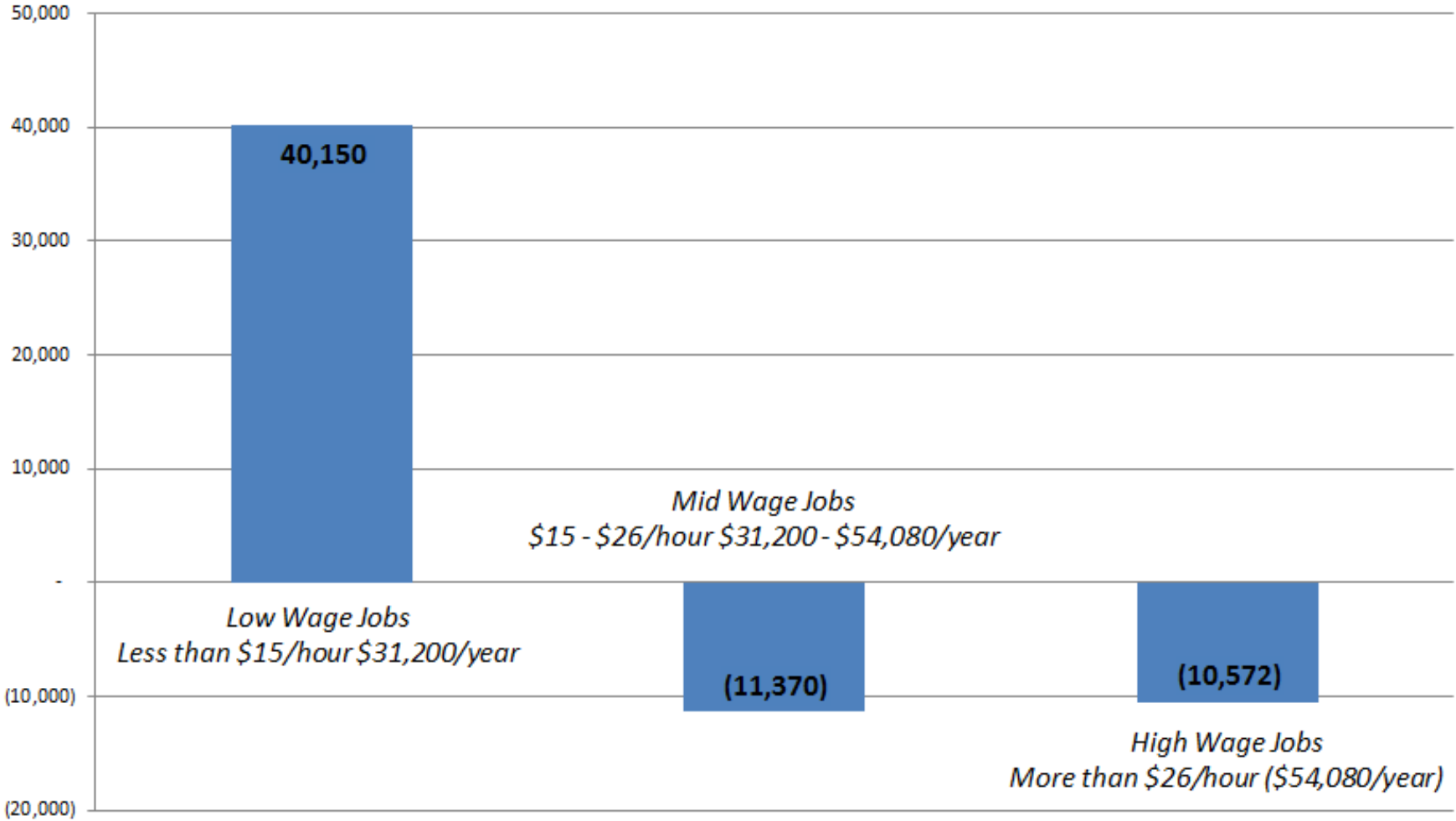
74% pay below \$13.00 per hour.

Industry	# Of Jobs	Avg. Hourly (2013)
Food services and drinking places	219,267	\$6.53
Administrative and support services	157,233	\$12.95
Transportation equipment manufacturing	130,542	\$28.00

Source: Current Employment Statistics

21st Century Job Loss (2001 – 2007)

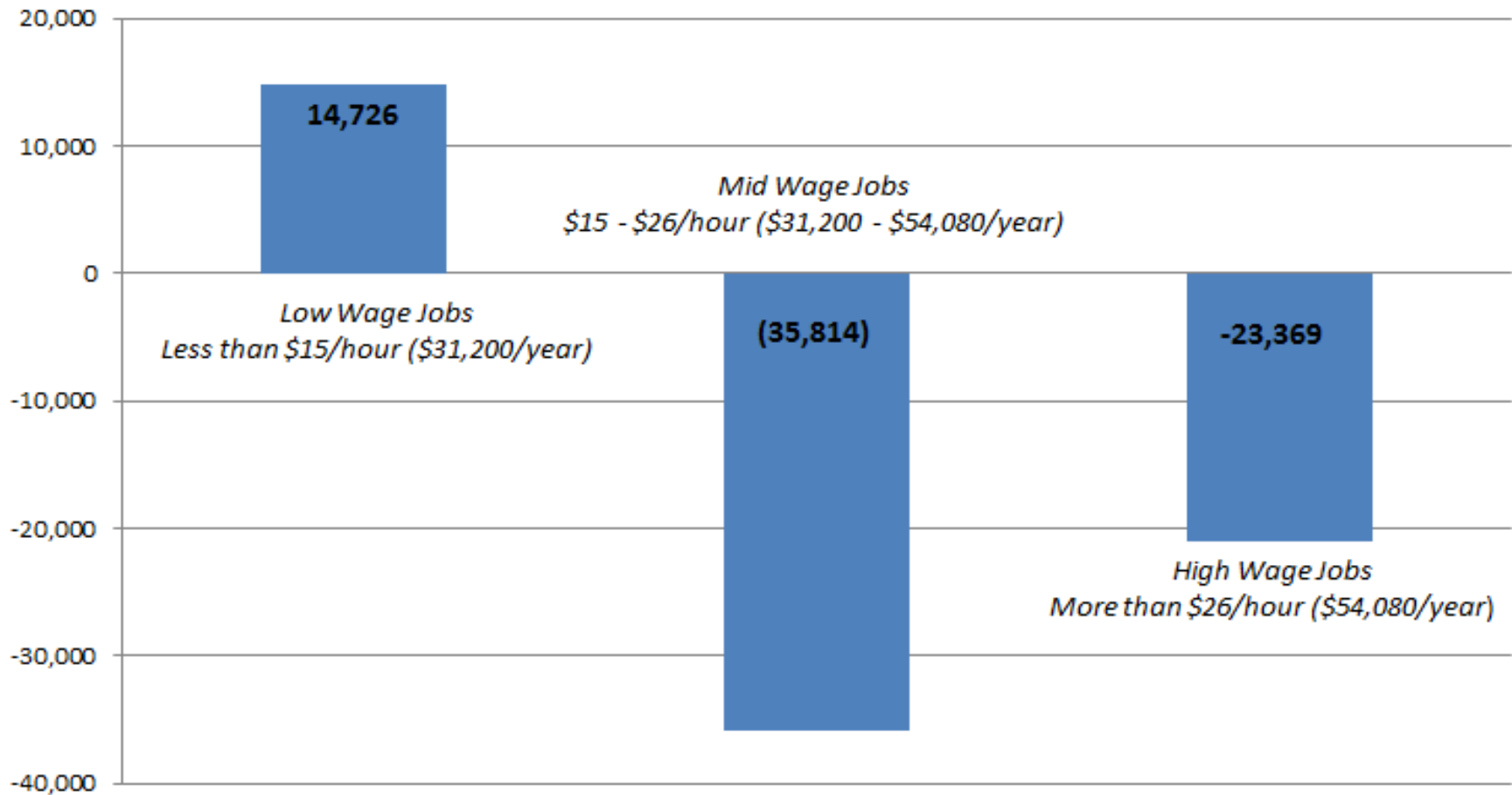
Net Private Sector Industry Gains and Losses, Indiana
by Time Period and Wage Group



Source: Quarterly Census of Employment and Wages

21st Century Job Loss (2007 – 2013)

Net Private Sector Industry Gains and Losses, Indiana by Time Period and Wage Group



Source: Quarterly Census of Employment and Wages

Contact Info

Website: www.incap.org/iiwf

Twitter: <https://twitter.com/INInstitute>

Facebook: www.facebook.com/IN.Institute

Blog: www.iiwf.blogspot.com

Derek Thomas

dthomas@incap.org

(317) 636-4232

(800) 382-9895